



Musical Notes



The Symphony League of Santa Cruz County Newsletter

2010-2011 Season Number 1

September 25, 2010

Highlights

- Invitation From Lifelong Learners 2**
Free Six Session Metropolitan Opera Series
- Ask the Conductor 3**
Maestro John Larry Granger answers your questions
- Home Tour Gets Exciting New Look 5**
Candlelight tour with gala grand opening
- Symphony Season 2010-2011 6**
Here are the details for the 2010-2011 season.

Special: Jon Nakamatsu Recital



Don't miss this Special Piano Recital October 30th, 8 pm at the Cabrillo Music Recital Hall. Call 420-5260 for info.

President's Message

by Gene Wright, President



It's hard to believe that we are already well into the 2010-2011 season where we have hit the road running at full tilt. Our first major fund raiser, the 25th annual Holiday Home Tour is taking on a new look and promises to bring us great experiences visiting six local homes.

Your Board of Directors are still looking at other possible fund raising events which will likely include some of the old stand-bys, as well as some innovative new approaches to providing support for our Symphony Orchestra. With a League membership exceeding 180 folks, we are looking forward to a year where every member participates in all activities and events. We are blessed with an outstanding symphonic heritage which we need to perpetuate in every way possible, and that is our goal.

One of the many excellent suggestions made at this year's Association of California Symphony Orchestra's Annual Conference was that we should seek ways to reach out and partner with other local non-profits and like minded organizations in an effort to strengthen the objectives of both groups. We have had a unique opportunity to do just that. Dr. Noel Fishman, a member of the Symphony Association Board and an affiliate with UCSC Life Long Learners, proposed a pack-

age opportunity to the Life Long Learners which includes a season subscription to Symphony performances, a membership in the Symphony League and admission to the League Previews. In turn, the Life Long Learners Board has invited League members to attend a 6 session lecture on the Metropolitan Opera Series at no cost. You may see the particulars in a separate article in this issue of Musical Notes.

It is with great anticipation we await the opening performance Out of this World on Saturday and Sunday, October 2nd and 3rd , and I'm looking forward to seeing all of you at our first Preview on Friday, October 1st at the Municipal Auditorium.

Thank you for all that you do in support of the Santa Cruz County Symphony.

October 2/3 Concert



Robert Edward Thies plays Gershwin's *Rhapsody in Blue*. Also on the program, Fernandez *Batuque* and Holst *The Planets*. Details on page 4. Meet Thies at the Preview on October 1 (page 7).

Editor's Corner



Welcome to the first edition of Musical Notes for the 2010-2011 season.

Ask the Conductor

We're introducing a new feature, "Ask the Conductor." Each month, maestro John Larry Granger will answer questions submitted by League members. To get it started, I asked JLG to explain how the Symphony hires new players (page 3). But in the future, it's up to you. If you have questions about the Symphony, but were afraid to ask, this is your chance. Send your questions to editor@slscc.org or mail them to Harry Domash, c/o the Symphony League, 307 Church Street, Santa Cruz, CA 95060.

Got Ideas?

How could we improve this newsletter? Send me your ideas: editor@slscc.org.

League Website

Besides for this newsletter, I'm also the Webmaster for the League's website (slscc.org). The website has the potential to become a source of cash for the League by generating advertising revenues, by increasing attendance at fundraisers, and by selling products. But to make that happen, we need additional content that will draw more visitors to the site, and that's where you can help.

Writers: Get Published

We need articles either about our Symphony or about cultural activities in general; classical music, opera, dance, jazz, anything that would be of interest to people with a cultural bent. This is your chance to flex your creative muscles. Contact me at editor@slscc.org with your ideas.

Website Guru

I need an experienced web designer to help me upgrade our website. We're probably talking about eight hours or so per-month for the first two or three months to get the site in shape, and then additional small tasks from time to time. Contact me at editor@slscc.org if you're that person.

Help Plan Monthly Activities

The League has just set up a committee to plan a series of informal monthly get-togethers such as trivia nights, charades, or wine tasting. We need help planning these events. Contact editor@slscc.org.

Harry Domash

Invitation From Lifelong Learners

Free to League Members

Osher Lifelong Learning Institute at UCSC, more commonly known as Lifelong Learners, has invited League members to attend meetings of its new opera group at no charge.



"Opera Talk," is a series of six talks and discussions about the six operas that will be included in the Metropolitan Opera's 2010-2011 "Met Live in HD" series that will be shown at the Regent Theater on Pacific Avenue in Santa Cruz.

UCSC Emeriti faculty John Dizikes and Miriam Ellis will present talks on each opera. Here's the schedule.

<u>Date</u>	<u>Opera</u>
October 20	Boris Godunov
November 10	Don Pasquale
December 8	Don Carlo
February 23	Iphogenie en Tauride
April 6	Le Comte Ory
April 20	Capriccio

All talks are on Wednesdays from 11 am to 1 pm. Admission is free, but reservations are required. To reserve your spot, or for more information, send emails to editor@slscc.org or call Harry Domash at 831.685-1932.



Refreshments for Musicians

League members serve refreshments during the "break" at the orchestra rehearsal at the Civic Auditorium on Saturday afternoon on the day of the concert. These refreshments include coffee, tea, and juices, vegetable and fruit trays, and sandwiches and cookies.



The musicians really appreciate our efforts, plus it's a good way for League members to get to know them. Call Jan Pierce at 426-7446 if you would like to help.

Ask The Conductor

In this new feature, Maestro John Larry Granger answers questions submitted by League Members.



LM) How do you select players for the orchestra?

JLG) We select new players via an audition process. Usually, in early summer, we advertise the next season's openings via the American Federation of Musicians. Interested players send us résumés and

we invite all qualified applicants to audition. We hold the auditions in late summer, typically in August. This year it was August 24.

LM) How many positions are open each year?

JLG) Typically, we have openings in two or three categories. For instance, this year it was violins and violas. Most often, we have only one or two openings in each section of the orchestra.

LM) How many musicians apply for those positions?

JLG) For violinists, we might have 12 to 20 applicants. For other string instruments—less. For instance, this year we only had four apply for the viola openings. Since there are only two or three of a particular woodwind or brass instrument, the competition for those sections is fierce. There are always many more who audition than we have places for in the orchestra.

LM) How do the auditions work?

JLG) We send each applicant a list of up to a dozen passages from particular compositions that we might ask them to play. We have a panel of five judges, which includes me and the principal players from the appropriate sections. For instance, if we were auditioning violinists, we might have the concertmaster, and maybe the first violinist and the principals of the second violins, violas, cellos, and bass. A screen separates the candidates and the panel, so that the judges can't see the applicants.

Doing it that way insures that candidates are judged by their abilities. The orchestra personnel manager stays with the candidate and is available to help them or to answer questions that might come up. A union steward is also there to insure that candidates are treated fairly.

LM) Do all of the invited candidates show up for the auditions?

JLG) There's usually one or two that don't. However, we require a modest application fee from each candidate, which we return when the candidate does show up. Doing that minimizes the number of no shows.

LM) How many selections do the candidates play?

JLG) Typically five to seven selections. The whole process might take 15 or 20 minutes. Then, if it's a close call, the judges might call two or three candidates back for a second go-around.

LM) Then what happens?

JLG) If we find enough qualified candidates, we offer contracts to fill the open positions. Unfortunately, that means that most candidates, even though qualified, go home with just a thank you.

LM) If you know that someone is a qualified player, can you hire them without an audition.

JLG) Sometimes as a fill-in for a particular performance. But all permanent positions require an audition. There is formalized list of substitute players that is submitted by each section's principal player. That list is approved by the conductor and used by the personnel manager as a guide for hiring substitute players.

LM) Thank you.

If you have questions about the Symphony, but were afraid to ask, this is your chance. Send them to editor@slscc.org.

You Are Invited!



We're having another **New/Prospective Members Party** on Friday, November 5th at the lovely home of Russ and Mary Ann Hobbs, 146 Morrissey Blvd in Santa Cruz. The party will be from 5 to 7 pm. Drinks and

hors d'oeuvres will be served. Bring along some prospective new members if you can, and let's have a great time!

Connie Adams, Membership V. P.

Concert #1: Out of this World

Santa Cruz Civic: Saturday, October 2, 8 pm • Mello Center Watsonville: Sunday, October 3, 2 pm

Fernández *Batuque*



Brazilian composer Oscar Lorenzo Fernández (1897-1948), also a leading academic, founded both the Brazilian Conservatory and the Brazilian Academy of Music. Originally composing in a style inspired by Claude Debussy, but by the time that he created *Batuque*, his music reflected

Brazilian culture.

Batuque is a Brazilian dance of African origin, involves singing and dancing, with rhythms being marked by stamping, clapping and slapping, and drumming. The name of the distinctive Brazilian percussion sound, *batucado*, derives from *batuque*.

Batuque was originally one of the three movements of a *Reisado do pastoreio* (Pageant of the Manger), a suite that depicted the bringing of gifts to the infant Christ by the Three Magi, an event traditionally celebrated on January 6.

Gershwin *Rhapsody in Blue*

Robert Edward Theis, pianist



George Gershwin wrote *Rhapsody in Blue* at the request of bandleader Paul Whiteman in 1923. The piece was performed by Whiteman's band, with Gershwin at the piano, when it premiered on February 12, 1924, as part of a concert titled, "An Experiment in Modern Music."

The composition, which combines elements of classical and jazz music, was orchestrated for the concert by Ferde Grofé. *Rhapsody in Blue* established Gershwin as a serious composer. By the end of 1927, Whiteman's band had played the *Rhapsody* 84 times, and its recording had sold one million copies.

Holst *The Planets*



British composer Gustav Theodore Holst (1874 – 1934) composed almost 200 works, including operas, ballets, choral hymns and songs. Holst became music master at St. Paul's Girls' School in 1905 and director of music at Morley College in 1907, continuing in both posts until retirement.

The Planets, Op. 32 is a seven-movement orchestral suite written between 1914 and 1916. Each movement is named after a planet and its corresponding astrological character. Based on the principals of astrology, each movement is intended to convey ideas and emotions associated with the influence of the planets on the psyche.

The movements are Mars, the Bringer of War, Venus, the Bringer of Peace, Mercury, the Winged Messenger, Jupiter, the Bringer of Jollity, Saturn, the Bringer of Old Age, Uranus, the Magician, and Neptune, the Mystic.

The first complete public performance was given in London on 15 November 1920 with the London Symphony Orchestra conducted by Albert Coates.

"Music washes away the dust of everyday life." Berthold Auerbach

Celebrating, Honoring, Remembering



A very important function of our League is to act as a depository for funds donated in celebration, honor, remembrances or simply gifts directed toward support of the Symphony. This is a way to remember others, and at the same time, benefit the symphony.

Recent donations were made in memory of Al Herman by Peggy Crocker and Peggy Minier.

Home Tour Gets a New Look
The 25th Annual Fall Candlelight Home Tour



This year will mark the 25th anniversary of the Symphony League's Holiday Home Tour and it will be billed as The 25th Annual Fall Candlelight Home Tour. It is planned to take place on Friday, December 3 and Saturday, December 4

from 4:00 to 8:00 pm, and will feature six outstanding homes in the county. On Friday evening we will enjoy a gala grand opening where food and drink will be served during a very special silent auction. The homes, in addition to interior holiday decorations, will be identified by luminaries leading to the entrances.

General tour tickets will be available for \$25 (in recognition of our 25th anniversary) and admission to the grand opening will be \$20. There will also be an op-

portunity drawing with tickets selling at the rate of 5 for \$20. The grand prize winner of the opportunity drawing will receive a Christmas tree fashioned and built by Mary Ann Hobbs that will be decorated in a silver motif.

Chairs Pamela Raabe, Mary Ann Hobbs and Peggy Minier are looking forward to a large contingent of volunteers to make this project a huge success. Please contact any of the above to be a part of what promises to be an outstanding community event.

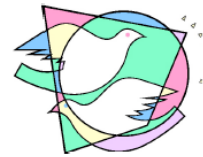
*A Wedding Designed
 Just For You*

REV. CLYDE VAUGHN

831-212-1052

CVFAAD@COMCAST.NET

WWW.WEDDINGSWITHREVCPLYDE.COM



A Warm Welcome to New Members

by Gail Mowatt

Meet Audie and Paul Henry

When I asked these new members what prompted them to join the League, they gave a surprising reply: "Connie Adams forced us to!" Thinking of our gracious and mild-mannered membership chairman Connie, I can only say, "Good job, Connie!" Both of the Henrys are experienced musicians, Paul playing piano by ear and Audie playing the viola with the Cabrillo Orchestra. Both were elementary teachers in Sacramento who moved here 13 years ago from Sacramento with the goal of being near their daughter. They continued their many years of membership in AAUW and Lions, now numbering 49 years, and added LLL and now the League. Audie has already attended a steering committee meeting for the December home tour, so their volunteer activity for the league is underway. Audie has a great fondness for the music of Bach and Paul favors operatic music. Be sure to look for them and give them a hearty welcome.

Meet Denise Valencia

The preview featuring Jon Nakamatsu last year prompted new member Denise to join the league. She enjoyed the interaction with the soloist, but also was pleased by the friendly people she met from the league.

After moving here from Sunnyvale 20 years ago with her late husband, she has become very involved in the community with activities at her church, hospital, AAUW, The Museum of Art and History, LLL, and a book club. Now she is ready to support League events beginning with the Candlelight Home Tour.

Denise is fond of opera, and has found Mozart "sneaking up on her" to become her favorite classical composer. She will be looking forward to the January preview and concert featuring Mozart's Symphony #39. Welcome, Denise.

Board Meeting Highlights

September 13, 2010

by Ola Monaghan, Secretary



President Gene Wright announced that the Life-long Learners group had invited Symphony League members to attend six lectures about the Metropolitan Opera at no charge. Gene also said the mem-

bership guide was near completion and advertising was needed (business card size ads go for \$25). Gene said the this year's budget had not been completed and he called a meeting for Sept. 20 to brainstorm fund-raising ideas. Finally, Gene noted that a **Coupon Book Chairperson** is needed.

Corresponding Secretary Peggy Minier requested that members notify her of illness or death of League members and family so that she can respond in a timely fashion.

Treasurer Sheila Vaughn distributed a financial report showing a balance of \$15,873..

Home Tour Chairperson Pamela Raabe presented the final poster design, said seven houses were being reviewed, and invitations were prepared and advertising planned. She reported that the Rittenhouse building was being considered for the gala/auction with champagne and hors d'oeuvres to be served. She said that items for the auction were needed.

Ola Monaghan reported that a theme for the annual **Spring event, "Journey down the Nile,"** had been chosen. She said the Congregational Church on High Street was being considered as the venue, a caterer who could prepare Egyptian food had been contacted, and decoration ideas were being explored.

Preview and Educational Program Chairs Gail and Bill Mowatt said that Pilar & Jack Kopecky would help them with the first Preview, but greeters for the event were still needed. Gail also **said that she will perform** new member interviews and find mentors for new members.

Membership Chair Connie Adams reported the membership total had reached 184 members.

New **Musical Notes Chair** Harry Domash, who is also heading the **Website Committee**, said that volunteers are needed for that committee.



Cynthia Kilian GRI, SRES
DRE # 00930574

Santa Cruz Office
1602 Ocean Street
Santa Cruz, CA 95060

Office Phone: (831) 426-4100 x269
Office Fax: (831) 426-7830 & 426-7804
Mobile Phone: (831) 688-8886
[Contact Me](#)

Symphony 2010-2011 Season

#1: Out of this World • Oct 2/3

FERNANDEZ: Batuque
GERSHWIN: Rhapsody in Blue
Robert Edward Thies, Pianist
HOLST: The Planets

#2: Strictly Classical • January 29/30

BOYCE: Symphony No. 5
BEETHOVEN: Triple Concerto
Pacific Trio, Pianist, Cellist, Violinist
MOZART: Symphony No. 39

#3: Decadent Delights • March 26/27

GRAINGER: In a Nutshell
LISZT: Piano Concerto Nos. 1 & 2
Adam Neiman, Pianist
RIMSKY-KORSAKOV: Capriccio Espagnol

#4: Ode to Joy • April 30/May 1

BEETHOVEN: Symphony No. 9 "Choral"
Cabrillo Symphonic Chorus

Family Concert

Rhythms of Life • March 6

BERNSTEIN

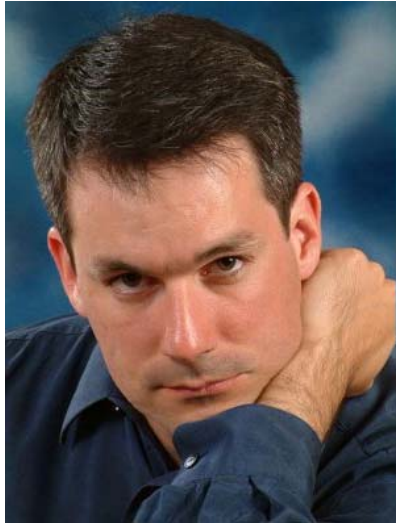
PECK

ELIZONDO

SAINT-SAENS

SOUSA

October Preview Features Robert Thies



Pianist Robert Edward Thies (pronounced “Theece”), soloist for the Symphony’s performance of George Gershwin’s Rhapsody in Blue, will be the featured guest at our October 2 preview.

Thies first captured worldwide attention in 1995 when he won the Gold Medal at the

Second International Prokofiev Competition in St. Petersburg, Russia. Thies was the only American pianist to win first prize in a Russian piano competition since Van Cliburn took the prize in 1958.

The many faceted Thies enjoys performing as an orchestral soloist, recitalist, and chamber musician. He has already performed forty concerts with orchestras all over the world including the Saint Petersburg Philharmonic, the Liepāja Symphony (Latvia), the Mexico City Philharmonic, the National Symphony of Mexico, the Auckland Philharmonia (New Zealand), the Louisville Orchestra, the Fort Worth Symphony, the Pasadena Symphony, and the Naples Philharmonic.



Advertising Opportunities

Are you in business? If so, you win two ways by advertising in Musical Notes. Since the League’s only function is to raise funds for the Symphony, you are helping to support an important cultural resource. Also, you are reaching affluent and like-minded consumers who are eager to do business with other Symphony supporters.

Advertising for the entire season’s newsletters costs only \$100 for a full-page ad, \$75 for 1/2 page, \$50 for 1/4 page, or \$25 for a business card sized ad. Contact editor@slscc.org for more info.

Preview Info

The first preview of the season is set for 4 pm, October 1 at the Santa Cruz Civic Auditorium.

The preview will feature a food and wine reception catered by League members. You can help make this an extra-special event by bringing one of your great Hors d’oeuvres that everybody raves about.

You are also invited to bring prospective members to the preview as guests (first-time guests only).

Please cut out and mail the following form to:

Bill & Gail Mowatt

1700K Escalona Dr. • Santa Cruz, CA, 95060

You can also reserve by email

(bgmowatt10@cruzio.com) or call (831) 425-7772.

Preview Order Form

Please reserve _____ seats for Preview #1 in the names of:

Guest: _____

Phone: _____

@ \$15 per person, I am enclosing \$_____ payable to the S.C.C. Symphony League.

___ **YES**, I’d be delighted to help out by bringing an Hor d’oeuvre to share.



315 Soquel Avenue
Santa Cruz, CA 95062

Lee Slaff

Eroker Associate

Bus (831) 423-9100 ext. 211

Dir (831) 423-9108

Fax (831) 423-9105

DRE #00825685

lslaff@wilsonbrosccommercial.com
www.wilsonbrosccommercial.com

Do Your Friends a Classic Favor. . .



Introduce them to the rich musical heritage of the Santa Cruz County Symphony.

Treat them to a performance and encourage them to become season ticket holders.

Expose them to the joys and benefits of Symphony League volunteerism.

Do your friends a Classical Music Favor!

